



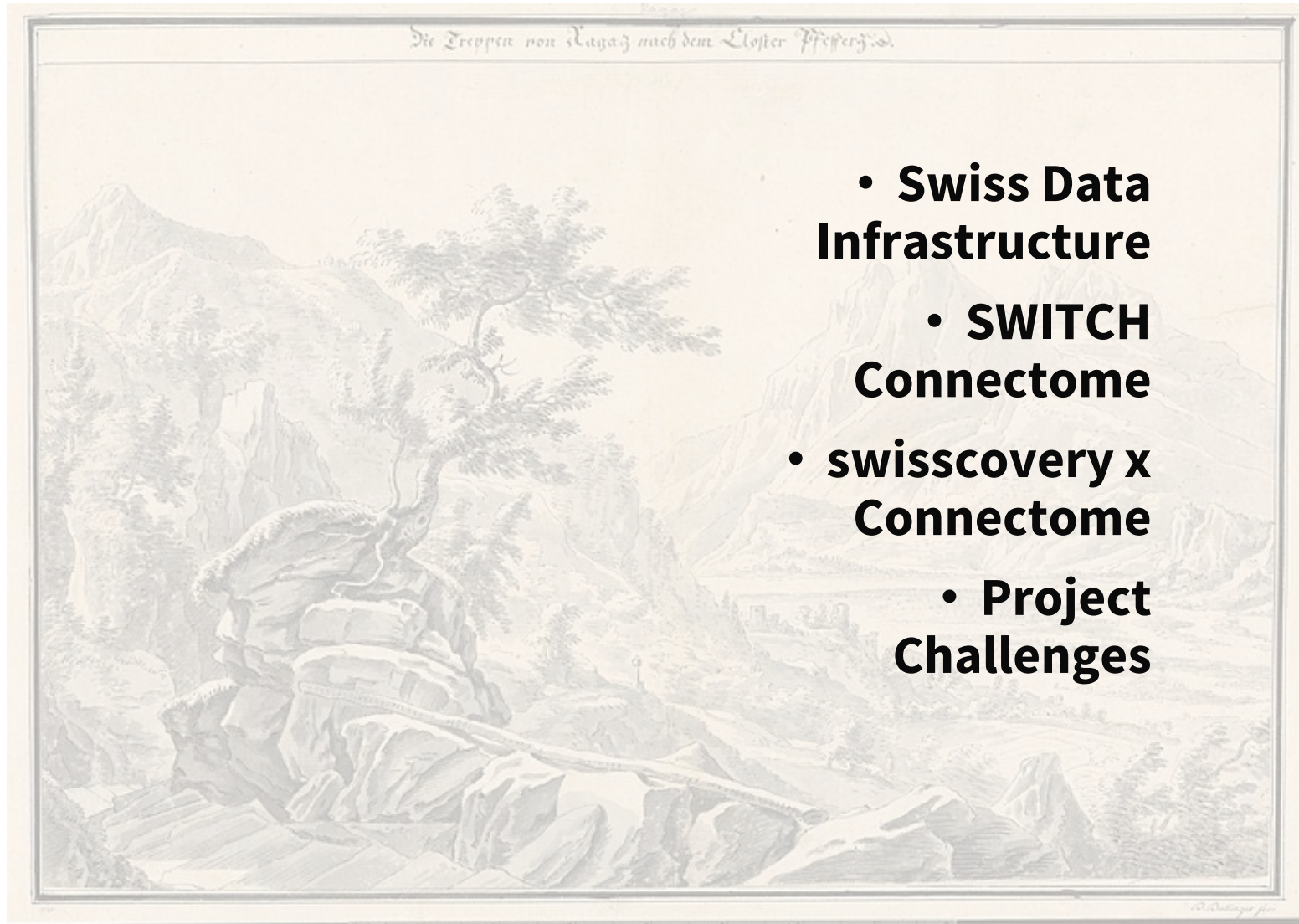
SLSP
Swiss Library
Service Platform

Cultural heritage data @SLSP

The case of the Connectome Project

12.06.2024

Overview



- **Swiss Data Infrastructure**
- **SWITCH Connectome**
- **swisscovery x Connectome**
- **Project Challenges**

Swiss Data Infrastructure (Selection)

- Stand-Alone repositories: e.g. via re3data.org
Example: Swiss National Data and Service Center for the Humanities ([DaSCH](https://www.dasch.ch))
- 60 repositories with 2 Mio. records searchable via in swisscovery
Example: [E-Rara](https://www.e-rara.ch)
- Aggregation/Portals: ExLibris Central Discovery Index (CDI), Europeana ...
- [DataCite Commons](https://www.datacite.org/commons)



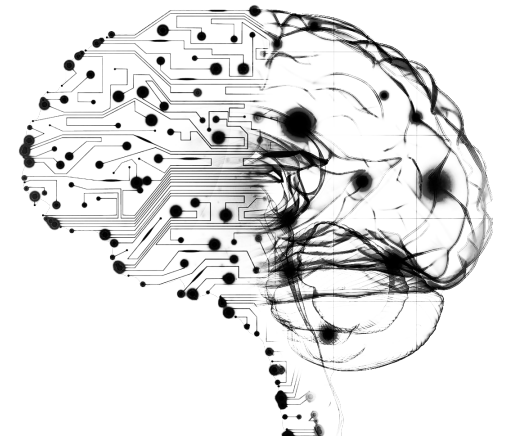
SWITCH

- National research and education network of Switzerland
- Member of GÉANT (pan-European data network) and EOSC
- Providing:
 - Cyber security
 - Cloud services (e.g. storage, computing)
 - Digital Identity (edu-ID)
 - Registry (.ch and .li)
 - Research network
 - ...
- Strategic partner of SLSP



Connectome

- Project to:
 - Promote reuse of open data from heterogeneous areas
 - Support development of open data practices
- Harmonization and artificial intelligence linking of metadata from various Swiss sources
- Data from: administrations, archives, NGOs, galleries, libraries, museums and other open data aggregators
- [Open Data Navigator](#) or [Switch Open Data API](#)



<https://blog.piekniowski.info/2021/11/17/brain-computer-confusion/>

Open Data Navigator

Q alps Search Ask X

Date ∨

Categories ∧

- Scholarly Article 2283
- Research Project 704
- Dataset 62
- Organization 13
- Person 1

Keywords ∨

Authors ∨

Providers ∨

Topics ∨

62 results Show topic map

Dataset
Production regions NFI
According to the geometry of the data set, Switzerland is divided into five areas, namely Jura, Central Plateau, Pre-Alps, Alps, and the southern side of the Alps. They represent different forest growth and...

Dataset
Digital data archive of zircon CL-images
2017
Western Alps
PhD thesis 'Analysis of zircon from deep basement units: Correlation across orogenic cycles in the Southern and Western Alps

Dataset
Forecast avalanche danger level European Alps 2011 - 2015
2018
european-alps

k-nearest neighbour search for the query

AI-suggested readings*

Scholarly Article
[Schön und sicher – der Blick auf die Alpen. Die...](#)

Research Project
[Die Alpen aus der Untersicht - Von der Verheissung der...](#)

Scholarly Article
[Effect of planting method on the growth and silvicultural...](#)

Dataset
[ASRB_WFJVF: Shortwave and longwave radiation...](#)
Incoming and outgoing shortwave and longwave 2 min radiation measurements at the Weissfluhjoch re...

Research Project



Forecast avalanche danger level European Alps 2011 - 2015

Publisher

[ENVIDAT: THE ENVIRONMENTAL DATA PORTAL](#)

Date Published

2018

This dataset contains the data used in the publication by Techel et al., 2018 *Spatial consistency and bias in avalanche forecasts - a case study in the European Alps* (Nat Haz Earth Syst Sci). For details on the data please refer to this publication. The dataset contains the following:

- shape files for the warning regions in the Alps
- highest forecast danger level for each warning region and day



Link to Source

f2dff8e3-fdff-4626-b650-a8ba5c19ef27@envidat

Keywords

[snow](#), [avalanche-forecast](#), [danger-level](#), [european-alps](#), [warning-regions](#)

Language

eng

Distributions

ID	Format	Access Conditions	
shape file warning regions Alps	(application/zip)	NonCommercialAllowed-CommercialAllowed-ReferenceRequired	Open Access
Forecast avalanche danger level	(text/csv)	NonCommercialAllowed-CommercialAllowed-ReferenceRequired	Open Access

Organizations / WSL / SLF / Snow Avalanches and Prevention / Forecast avar

shape file warning regions Alps

URL: <https://www.envidat.ch/dataset/f2dff8e3-fdff-4626-b650-a8ba5c19ef27/resource/c8329c09-60f5-4181-868>

Dataset description:

This dataset contains the data used in the publication by Techel et al., 2018 *Spatial consistency and bias in avalanche forecasts - a case study in the European Alps* (Nat Haz Earth Syst Sci).

Source: Forecast avalanche danger level European Alps 2011 - 2015

Resources

Forecast avalanche...

shape file warning...

License ODbL with Database Contents License (DbCL)

Additional Information

Field

Metadata last updated

Data last updated

Created

Format

License

DOI

Access Restriction

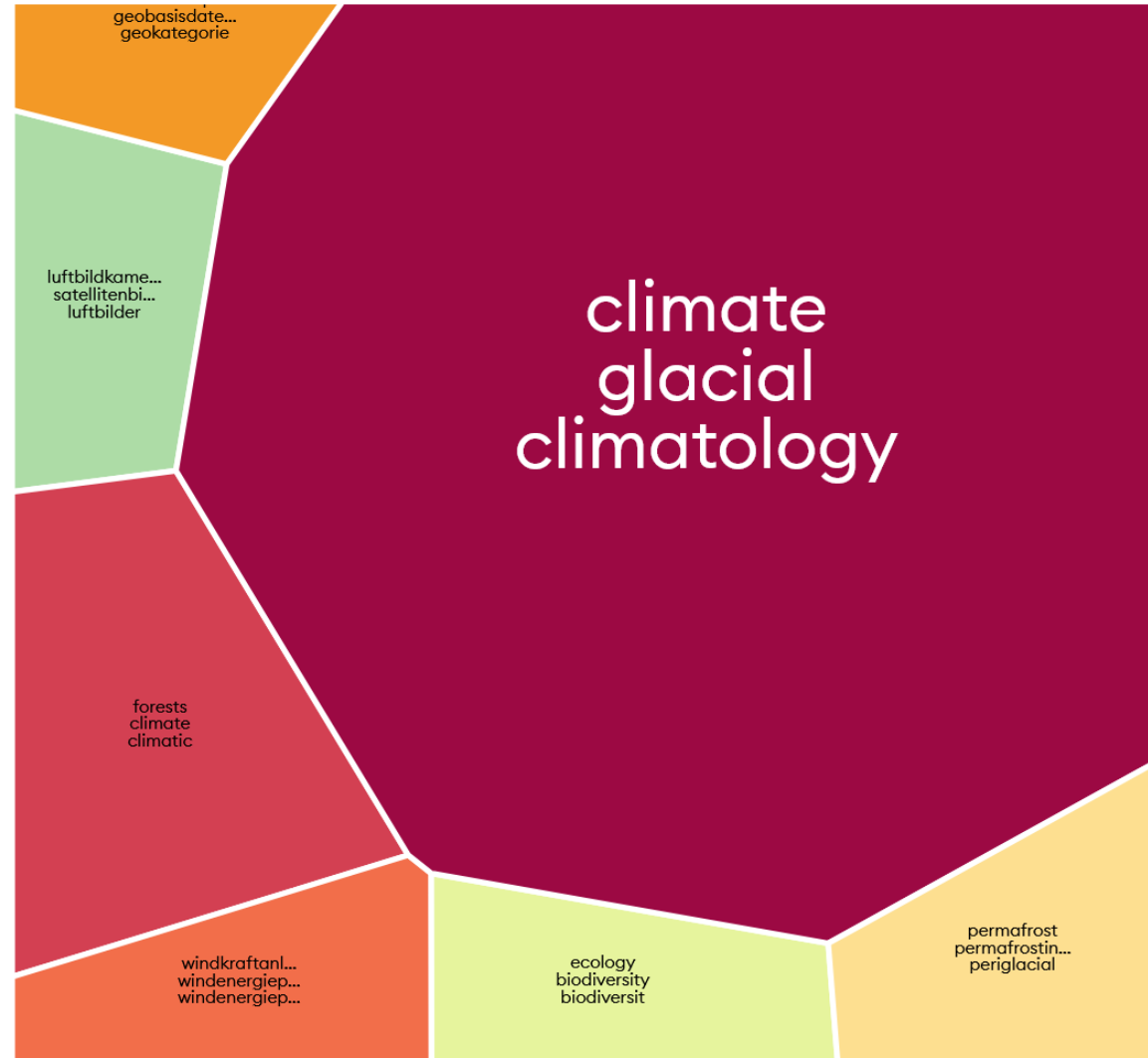
Publication State

Size

Topic Maps

Topics

- glacial · climate · climatology 13
- climate · forests · climatic 2
- windenergieprojektes · windkraftanlagenlärms · windenergieprojekten 1
- permafrostindikatoren · permafrost · periglacial 1
- geobasisdatensätze · übersichtsplan · geokategorie 1
- biodiversity · ecology · biodiversit 1
- satellitenbilder · luftbildkamera · luftbilder 1

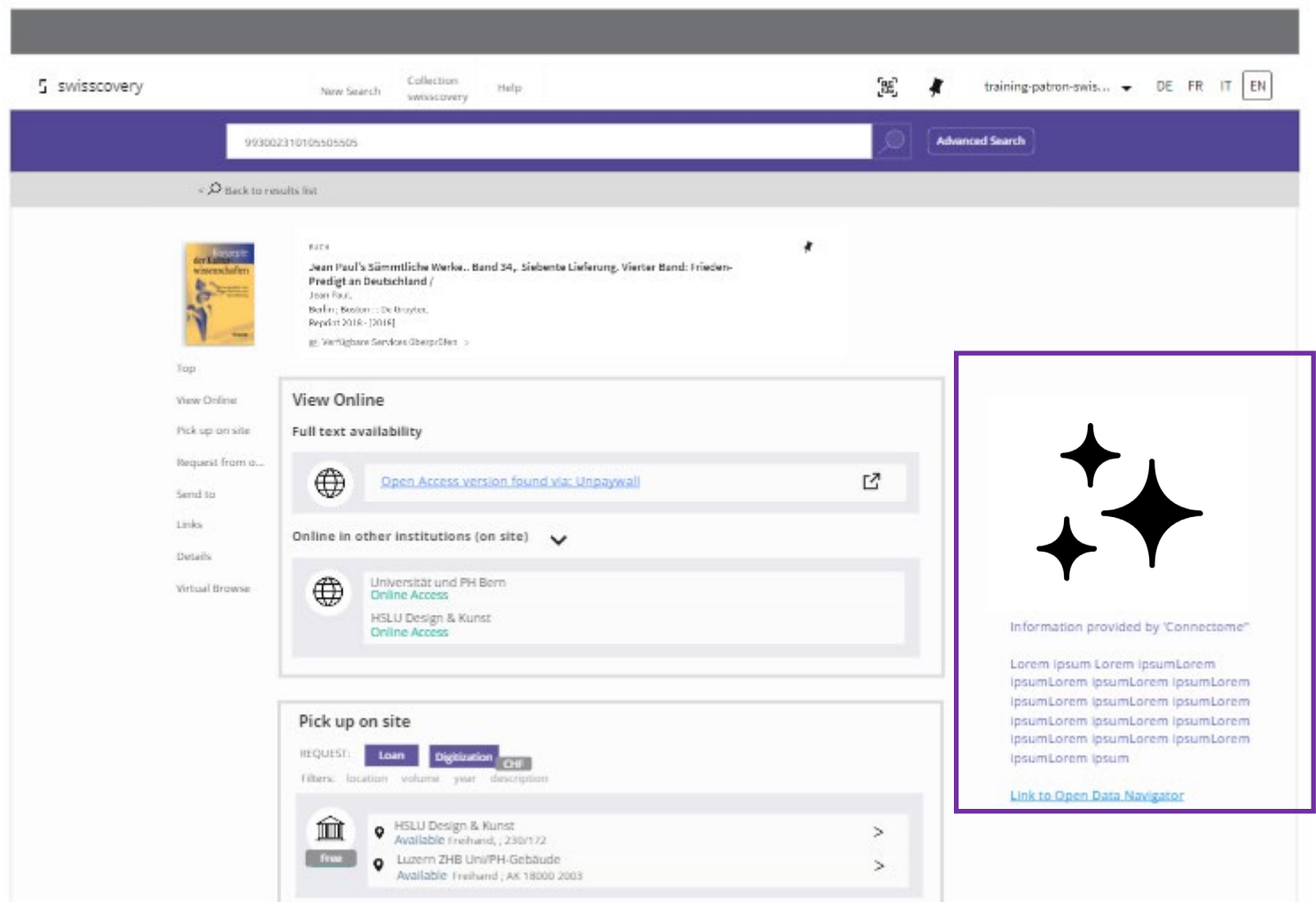


swisscovery x Connectome

- Two platforms from two institutions: synergies?
- Abstract scenarios:
 - Connectome harvests swisscovery?
 - swisscovery integrates connectome??
 - (artificially intelligent) linkage ?
swisscovery ↔ connectome
 - Another portal???



How could it look?



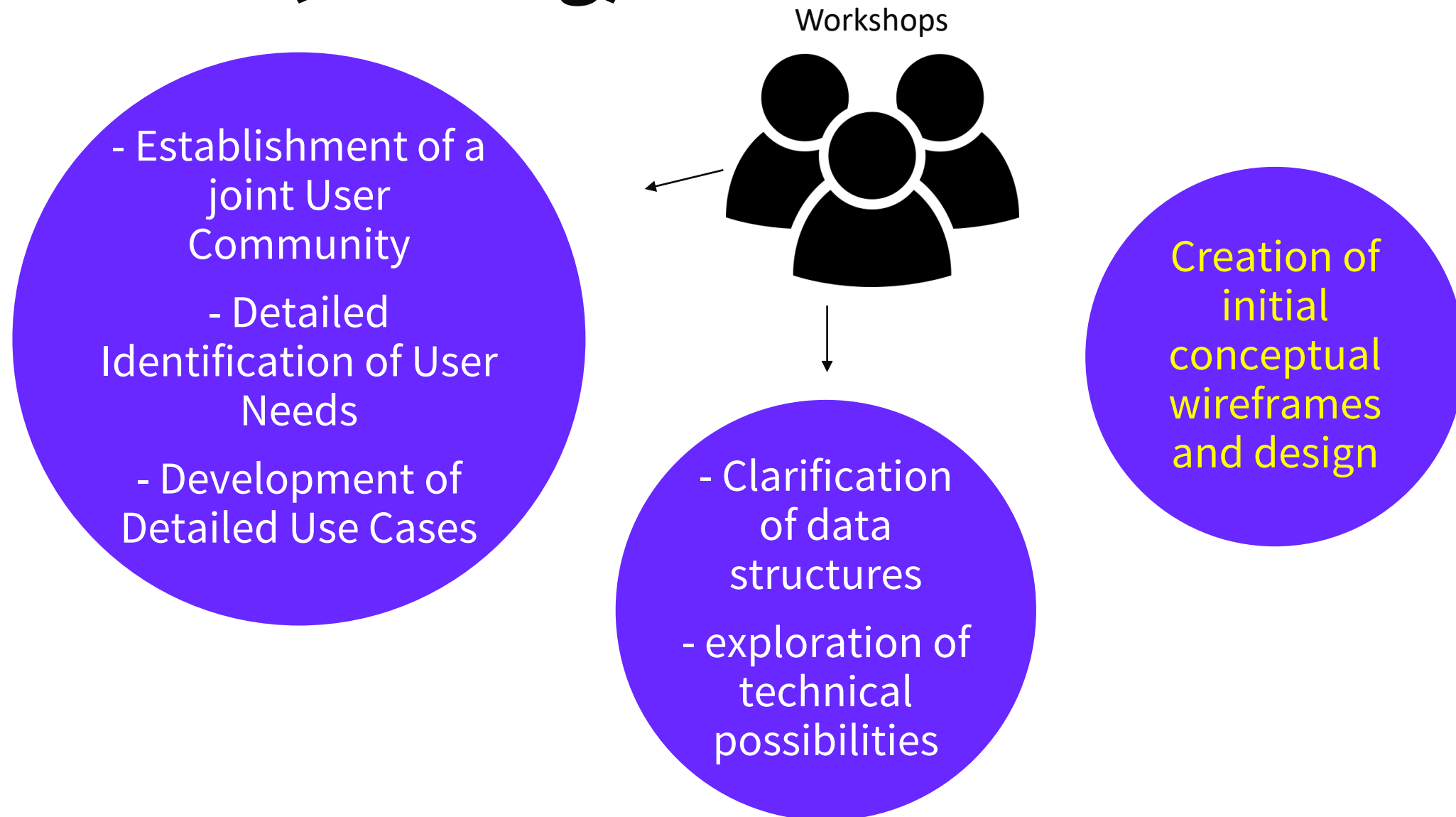
Project

„key synergy is the guidance of swisscovery end-users to relevant resources related to their search criteria in the Swiss research landscape by means of visualisation and providing contextual information.“

- Proof-of-concept
- Project 2024 Q2 – 2025 Q4 | 200h
- Data and discovery experts from both institutions
- Goals
 - Get familiar with end-user community
 - Specification of solution (added value & feasibility)
 - Implementation of identified solution
 - Evaluation & documentation



Phase 1 (running)



Data perspective swisscovery

- MARC21 XML / Dublin Core
- OAI / SRU / API
- Mainly library data / textual data
- Fine granularity
- Complex workflows / topology
- Data hosting and harvesting



*covering many entites: DOI, ORCID, ROR, URI, GND ...

Connectome

- Schema.org + RESCS (Research Commons) SHACL shapes
- GraphQL API
- Broad data → mapping
- coarse granularity
- Complex workflows/topology
- Data harvesting

```
{
  "conditionsOfAccess": "Additional Restrictions: None",
  "datePublished": "2016-02-29",
  "identifier": "604-1-0",
  "keywords": [
    "Conflict, security and peace",
    "International politics and organisations",
    "LAW, CRIME AND LEGAL SYSTEMS"
  ],
  "@type": "Dataset",
  "author": [
    {
      "@type": "Person",
      "familyName": "Wenger",
      "givenName": "Andreas",
      "name": "Andreas Wenger",
      "@id": "https://data.connectome.ch/swissubase/person/Andreas%20Wenger"
    },
    {
      "@type": "Person",
      "familyName": "Szvircsev Tresch",
      "givenName": "Tibor",
      "name": "Tibor Szvircsev Tresch",
      "@id": "https://data.connectome.ch/swissubase/person/Tibor%20Szvircsev%20Tresch"
    }
  ],
  "name": "Meinungsbild zur Sicherheits- und Verteidigungspolitik der Schweiz - 2012",
  "@id": "https://data.connectome.ch/swissubase/dataset/604-1-0",
  "abstract": "The annual \"Security\" survey jointly conducted by the Military Academy",
  "sameAs": "https://doi.org/10.23662/2fFORS-DS-604-1"
}



<metadata>
  <record xmlns="http://www.loc.gov/MARC21/slim" xmlns:xsi="http://www.w3.org/2001/XMLSchema-i
  <leader> 01149nm a22002652c 4500 </leader>
  <controlfield tag="005"> 20240307171309.0 </controlfield>
  <controlfield tag="008"> 240129q17801820xx |||| | 0| k| d </controlfield>
  <controlfield tag="001"> 991171842028605501 </controlfield>
  <controlfield tag="019" ind1="" ind2="">
  <subfield code="a"> Exemplarspezifische Aufnahme, gesperrt für Veränderungen und das Anh
  </subfield>
  <subfield code="5"> ZBS/A150/20231004 </subfield>
  </controlfield>
  <datafield tag="019" ind1="" ind2="">
  <subfield code="a"> Datensatz aus Grafikdatenbank ZBS migriert </subfield>
  <subfield code="5"> ZBS/A150/2023 </subfield>
  </datafield>
  <datafield tag="040" ind1="" ind2="">
  <subfield code="a"> CH-ZuSLS ZBS </subfield>
  <subfield code="b"> ger </subfield>
  </datafield>
  <datafield tag="245" ind1="0" ind2="0">
  <subfield code="a"> Schloss Falkenstein im Canton Solothurn </subfield>
  </datafield>
  <datafield tag="264" ind1="" ind2="1">
  <subfield code="c"> [zwischen 1780 und 1820] </subfield>
  </datafield>
  <datafield tag="300" ind1="" ind2="">
  <subfield code="a"> 1 Druckgrafik </subfield>
  <subfield code="b"> Kupferstich </subfield>
  <subfield code="c"> 41 x 68 mm </subfield>
  </datafield>
  </record>
</metadata>
```

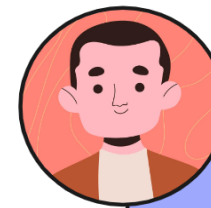


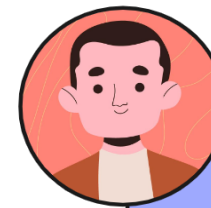

SLSP Personas*

- Conducted during workshops on agile project management.
- Facilitated by a Lecturer in Digital Business Management Expert
- Shaped through collective discussions and insights.



 Benisha		 Benisha's professional life
<ul style="list-style-type: none"> ♀ is 38 years old 📍 works at the university in Zurich 🏢 is working as assistant for a professor of African Studies for a project 🗣️ speaks German, (English) 		Benisha is academic staff in the Department of African Studies.
Type: Patron user (Researcher)		
<p>Channels swisscovery, slsp.ch</p> <p>Motivations Benisha is very ambitious and aspires to a career in the academic field.</p> <p>Frustrations When it takes her a lot of time to find resources she is searching for.</p> <p>Interests swisscovery (Primo), especially e-resources</p> <p>Why does she use our systems? What is her goal? Benisha needs to do research for the project and also loans media for her professor.</p> <p>Knowledge / Expertise of our systems ★★ Benisha uses the advanced search and different filters. She mostly is searching for e-serials. She uses the proxy function to be able to loan media for her professor.</p> <p>Technology Edge, HP laptop</p> <p>In her relationship with SLSP she'd like:</p> <ul style="list-style-type: none"> • Benisha does not have a relationship with SLSP. • Benisha needs to get media that is useful for her pretty quick. She prefers working with online resources, preferably OA. 		



 Phillip		 Phillip's professional life
<ul style="list-style-type: none"> ♂ is 33 years old 📍 lives in Neuchâtel 🏢 is working for the University of Neuchâtel 🗣️ speaks French, (German, Italian) 		Phillip is a postdoctoral researcher in statistics.
Type: Patron (Postdoctoral researcher)		
<p>Channels None</p> <p>Motivations Phillip dedicates his life to research and he wants to bring knowledge in his field much further.</p> <p>Frustrations Phillip would like for the library to have more budget in order to acquire way more resources, especially access to expensive databases for research. A couple of times, he even had to visit another university library in person, only to be able to access a specific database he critically needed for a paper. Phillip is also very much frustrated with the fact that many researchers, including his own peers, do not publish in Open Access. He himself makes sure to publish all his works in Open Access. Finally, he's a bit annoyed that for grey literature he relies on web searches because most of the time, grey literature is non-existent in swisscovery since libraries do not catalog this type of resource most of the time.</p> <p>Interests swisscovery (Primo) for access to databases and specific electronic journal articles.</p> <p>Why does he use our systems? What is his goal? Phillip uses swisscovery very often for finding relevant scientific literature and for accessing full text documents. Phillip also uses other library catalogs from around the world and heavily uses the export functionalities for saving references.</p> <p>Knowledge / Expertise of our systems ★★★★★ Phillip is a very proficient searcher in swisscovery. He would like swisscovery to offer more search options and to integrate AI to better represent results, in a different structure for instance, or any other improvement in the management of information.</p> <p>Technology Firefox, laptop</p> <p>In his relationship with SLSP he'd like:</p> <ul style="list-style-type: none"> • Phillip does not have a relationship with SLSP. • He heavily relies on databases • Phillip would like to be able to access more content, especially more Open Access research, all research funded by Governments should be Open Access • He would like swisscovery to present results in more advanced ways and to evolve along with current technologies 		

*demonstrating a strong connection to research-related activities

Non-end-users

- Importance of personas not using swisscovery
- Understanding motivations and research conduct locations
- Crucial for informing strategies to enhance swisscovery's appeal in research data options.



Skylar

👩 is 20 years old
📍 studies in Lausanne
🎓 is working on her bachelor degree in Physics
🗣️ speaks French, (English)

🎓 Skylar's professional life

Skylar is a student in physics at EPFL.

Type: Patron user (Student)

Channels None

Motivations Skylar wants to successfully graduate and obtain her bachelor's degree.

Frustrations Studies are very stressful. There is too little time to do everything professors request from her.

Interests No interest in any functional area. Her interest lies in her achieving her studies.

Why does she use our systems? What is her goal? Skylar does not use swisscovery. Most of the time, her professors provide texts she has to study on the university's LMS. Her field heavily relies on e-ressources, rather than on physical resources. When she needs to access scientific literature she browses the web where she can freely access them, she uses Sci-Hub or asks her peers to share e-documents with her. Her goal is to spend as little time as possible on literature management and to focus on other academic tasks she has to perform.

Knowledge / Expertise of our systems : none

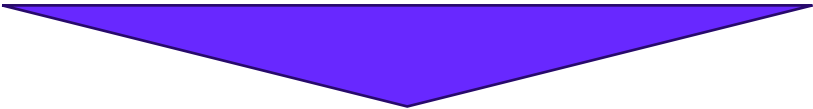
Skylar heard of swisscovery in a library orientation course and saw a promotional flyer on swisscovery once at the library when she accompanied a friend but doesn't use swisscovery herself.

Technology Chrome, Microsoft Surface laptop

In her relationship with SLSP she'd like:

- Skylar does not have a relationship with SLSP.
- Skylar wishes to quickly and easily find the material she needs online very periodically (once or twice a year only).

Personas / user stories for Connectome

- Extension of SLSP personas with user stories:
 - Finding and accessing resources / datasets (student / researcher)
 - Finding and connecting with persons (student / researcher)
 - Special cases: “grey” data, Open Educational Resources (OER)
- 
- Call for participants covering several domains
 - Mixed methods:
FG > design thinking > Usability Walk-through | acceptance criteria



Project Challenges

- **Data**

- Swissness of data
- Standardized data aggregation vs. standardized data curation
- Deduplication / overlap

- **Operational Models**

- Flexible project vs. established service

- **Community**

- Similar stakeholders but different users?
- Different visions



Project Challenges

- **UI**

- Overload of swisscovery
- bibliographic data in aggregation vanishes (data scattering)
- Scope or every data type needs special discovery

- **Dependencies**

- ExLibris (Primo VE)
- AI disrupture





Thank you!

Contacts

rouven.schabinger@slsp.ch

nikol.stepan@slsp.ch