



**GLOBAL SOLUTION  
PROPOSALS IN THE  
NEW WORLD ORDER:  
THE CASE OF  
MEF UNIVERSITY LIBRARY  
INTERLIBRARY-LOAN  
SERVICE**

***BONJOUR!  
HELLO!  
MERHABA!***

# INTRODUCTION

***IPEK YARAR / MEF University, Technical & User Services & Social Media Librarian***  
***[yarari@mef.edu.tr](mailto:yarari@mef.edu.tr)***

***Turkey, Istanbul / Maslak, 34396***

# Contents of this presentation

*Here's what you'll find in this presentation*

- 1. About MEF University & MEF University.*
- 2. Coronavirus disaster in Turkey*
- 3. How has the coronavirus affected Turkey's higher education and academic libraries?*
- 4. Local ILL services during the COVID-19 pandemic.*
- 5. MEF University Library in RSCVD initiative during the COVID-19 pandemic.*
- 6. HERMES Project & MEF Library*

**M** odern (Modern)  
**E** ğitim (Education)  
**F** en (Science)

# 01

## About MEF University & MEF University Library

Founded in 2014

Learning Model: Flipped Learning

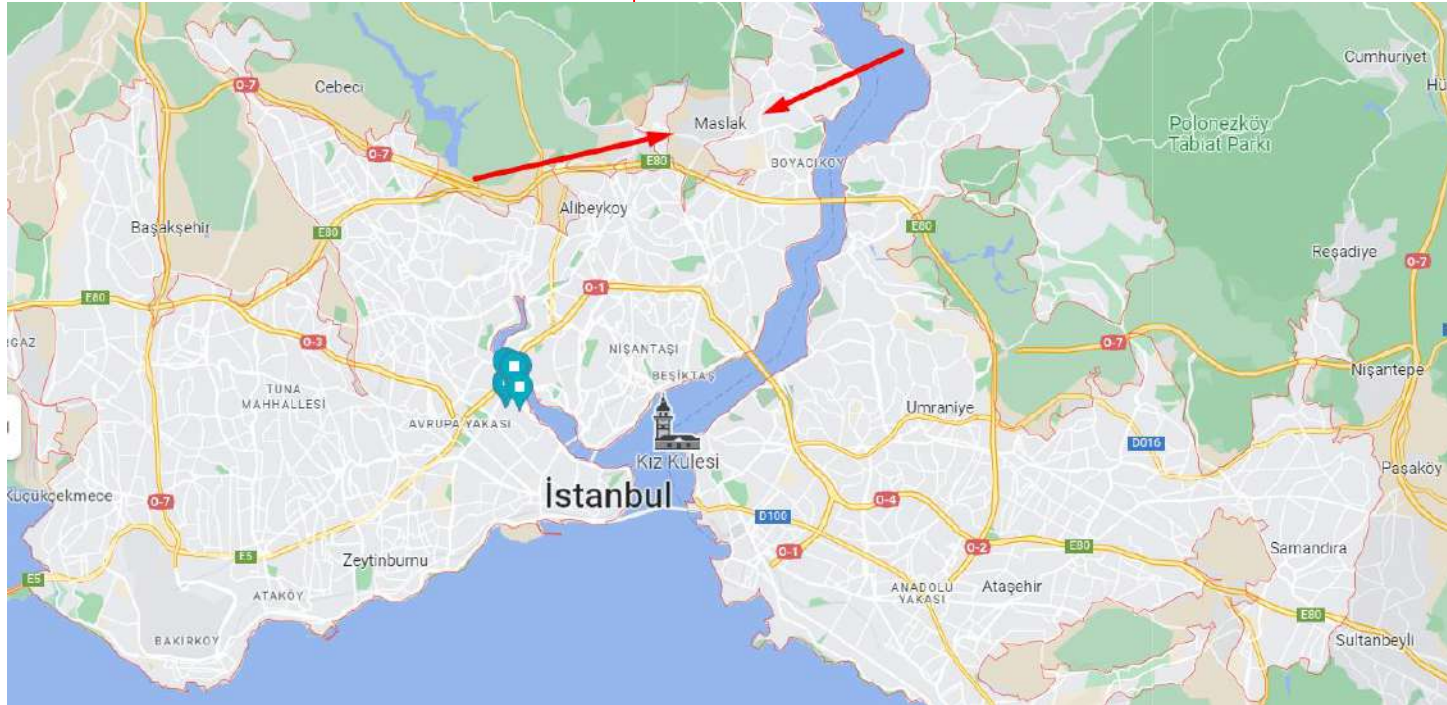
Faculties: Law; Engineering; Education; Social Science; Art & Architecture.

Population: 4000~ students, 450~ academic staff, and administrative staff.

Location: Maslak, Istanbul / Turkey



# MASLAK, ISTANBUL, TURKEY



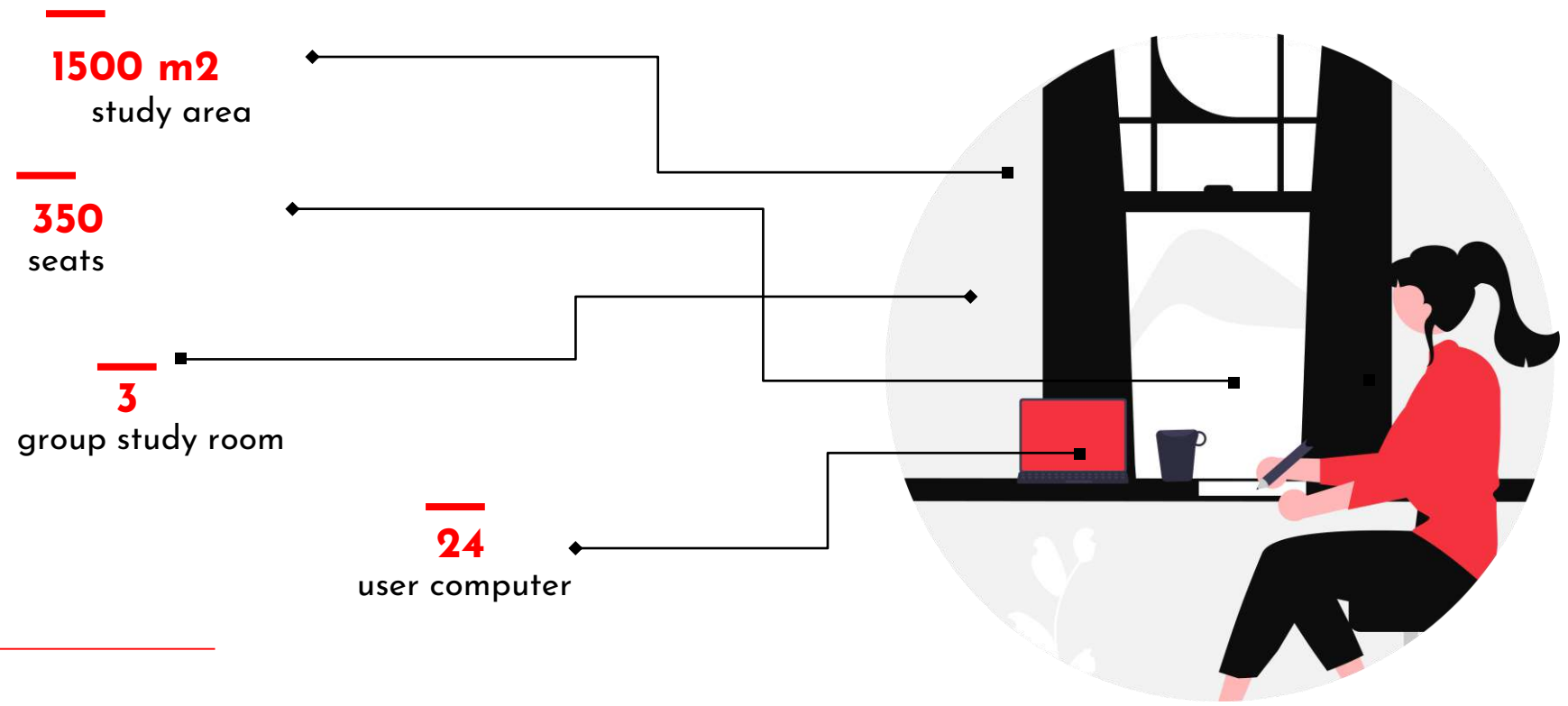


**— Modernist**      **— Collaborator**  
**Libertarian**



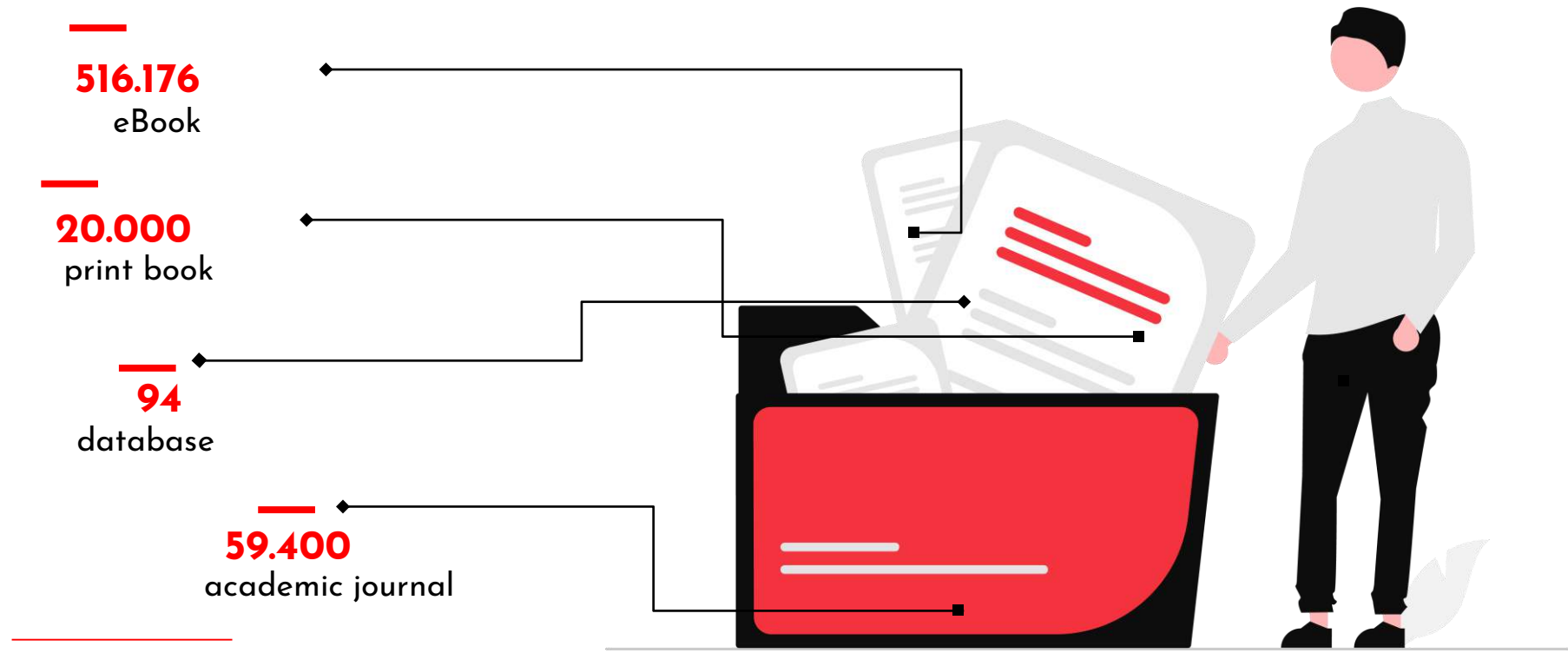
# NUMBERS OF MEF LIBRARY

## physical facilities



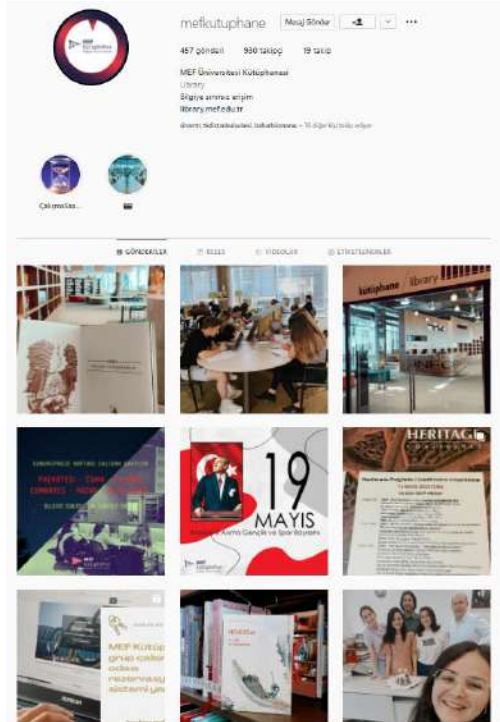
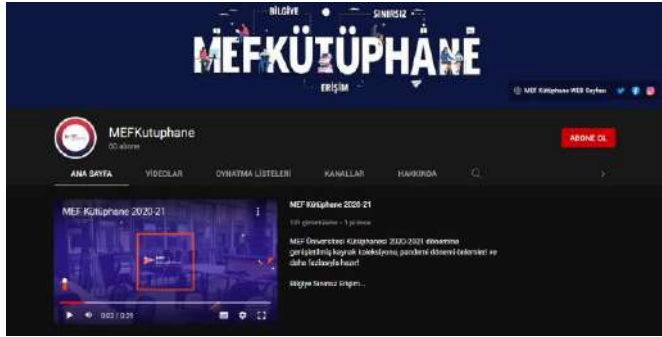


# NUMBERS OF MEF LIBRARY resources



# MEF LIBRARY

on social media



---

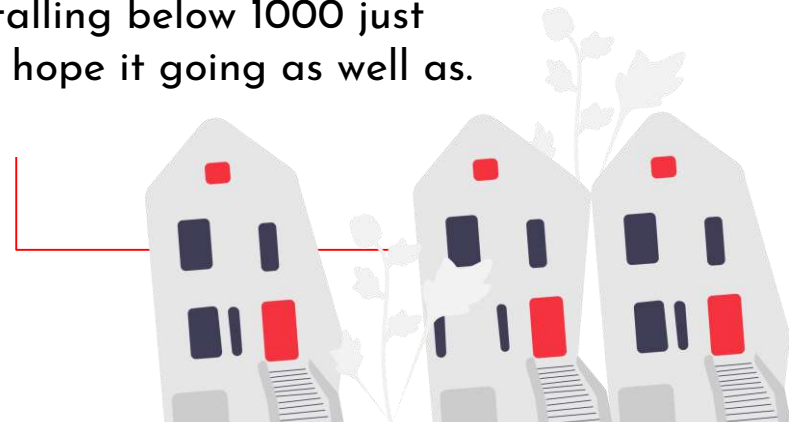
# 02

## Coronavirus Pandemic in Turkey

---

#TBCORONAVIRUS

In March 2020-2022, 15 million cases and nearly 10,000 lost of our citizens to this disease. As of April 26, 2022, the coronavirus measures in Turkey were eased, with the number of cases falling below 1000 just before I arrived. I hope it going as well as.



# 03

## How Has The Coronavirus Affected Turkey's Higher Education and Academic Libraries

**TIME TO ONLINE EDUCATION FOR EVERYONE**

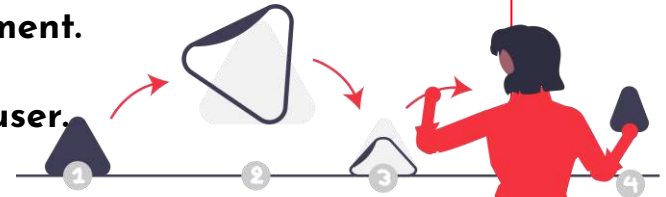


# 3

**Support to the library management of the institution during the pandemic process. (Budget, Technology, Incentive and other possibilities)**

**Support of library management.**

**Librarian's support to the user.**



## Local ILL Services During the COVID-19 Pandemic

### *IMECE BY ANKOS KITS*

Providing Articles, Book Chapters, and Thesis requests online in ILL services (KITS, TÜBESS, KITS - İmece) while continuing at the national level, with the initiative of IFLA RSCVD free eSourcing has gained an international dimension.

IMECE e-resource request and supply transactions are carried out through the KITS Platform.

While KITS requests are made by choosing an institution, IMECE requests are sent to all registered institutions. It has gained speed in the process of supply since it fell.



# 05

## MEF University Library in RSCVD initiative during the COVID-19 pandemic.



Goals: This service is a pilot project run by and dependent upon volunteers. Our intention is to continue this service for at least as long as access to library collections is restricted in any part of the world.\*

When: 21 April 2020 - ....

From Whom: By volunteer librarians, 8 of whom work in the Turkish University Libraries.

To Whom: Researchers from around the world.

\*<https://www.ifla.org/news/resour-sharing-during-covid-19-rscvd-tool-launched/>

# Our team

Ertuğrul Çimen



MEF Library, Director

Ramazan Çelik



MEF Library, Assistant  
Director

Ipek Yarar



MEF Library, Technical  
Services | Cataloging &  
Social Media Specialist



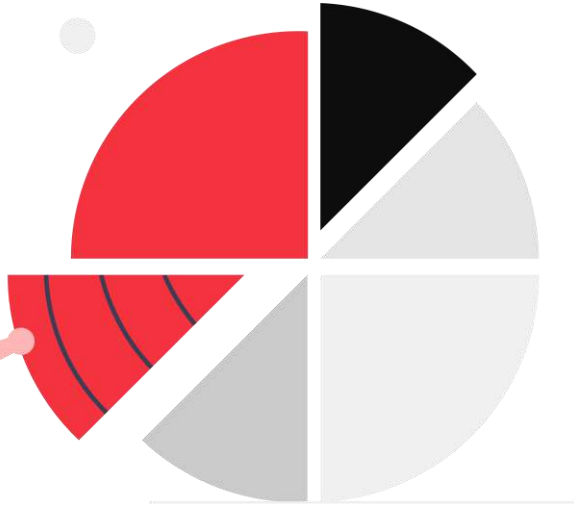
# MEF LIBRARY STATISTICS

**1839**

Number of  
Submitted Resources

**22**

Number of  
Resources Provided

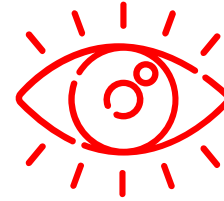
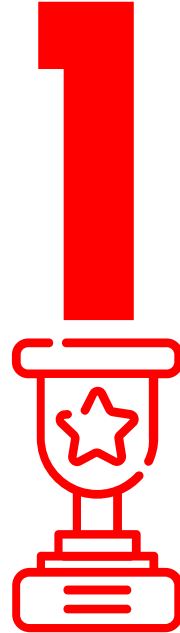


# Our Motivation!



Thanks to the  
MEF University

for their support  
during the pandemic.



Introducing  
Turkish Librarianship

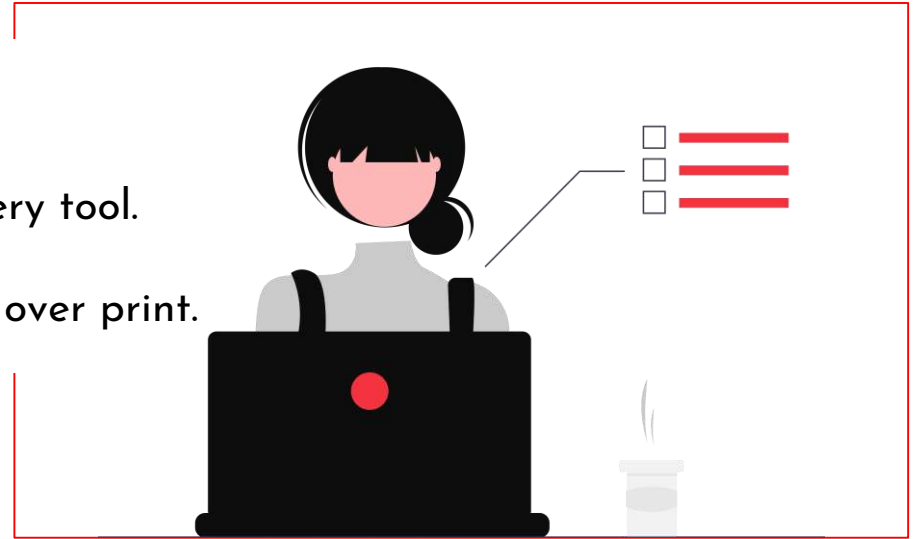
to be more visible  
globally

# How Did We Succeed?

We did not stick to working hours!

Special adjustments we made to our discovery tool.

Positive return on investment in e-resources over print.



# HERMES PROJECT

**5**

## Country

Turkey, Holland, Italy,  
Spain & Lebanon

**5**

## Institution

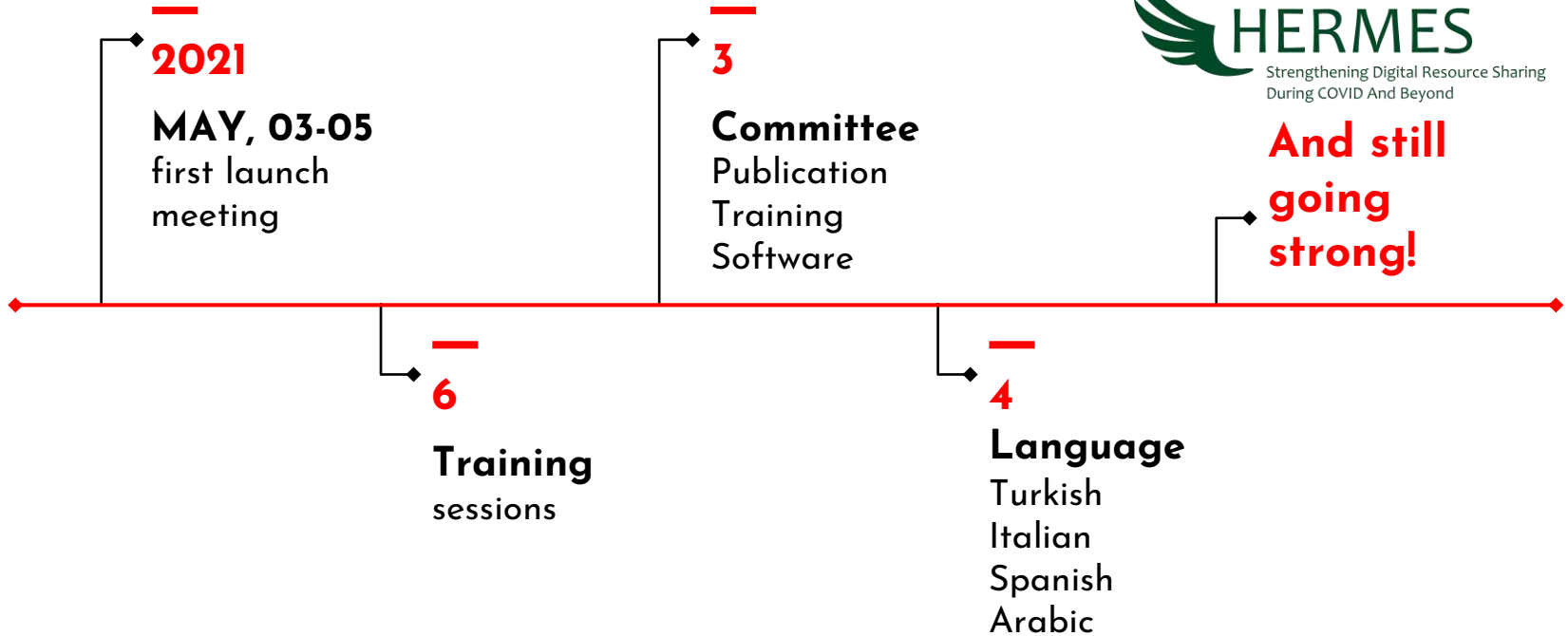
MEF University,  
IFLA,  
CNR,  
Cantabria University,  
University of Balamand



# HERMES PROJECT & MEF LIBRARY



**And still  
going  
strong!**



# Thanks!

Do you have any questions?

yarari@mef.edu.tr

+90 532 651 5825

library.mef.edu.tr

CREDITS: This presentation template was created by **Slidesgo**, including icons by **Flaticon**, and infographics & images by **Freepik**.



@mefkutuphane  
@ipekyrr